

# Torqo II+™ 1600

Mesa's new twist on cap testing

The Torque product line has been providing accurate torque measurement readings for the past 50 years. The Torqo II+ system incorporates 15 years of factory floor proven technology, supplying customers with precision torque data to help improve the production as well as the packaging of the product. Mesa Torque systems have become the standard in the beverage and pharmaceutical industries, consistently providing accurate and reliable torque level readings to help companies manage quality control.

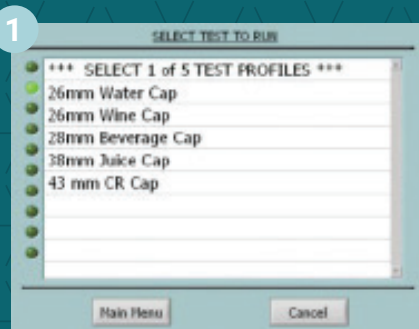


## Features & Benefits

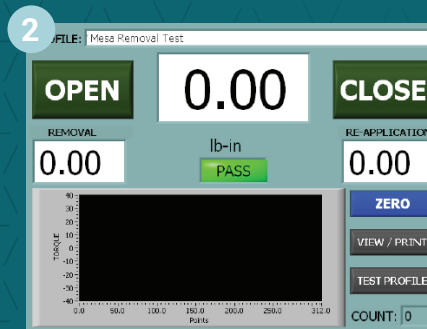
- + Compact Size
- + Constant Speed Drive
- + Simple Touch Screen Programming
- + Calibratable in the Field
- + NIST Traceable Calibration
- + Wide Operating Temperature Range
- + Non-destructive Testing
- + Full One-year Warranty
- + USB Connectivity
- + Ethernet Connectivity
- + External Universal Power Supply
- + LAN Connectivity
- + RS-232 Port

## How easy is it to operate the Torqo II?

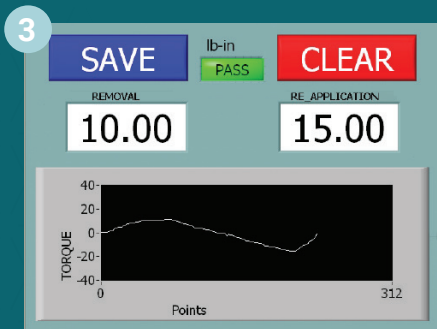
### 1 Select a product to test



### 2 Touch "open"



### 3 View the Test Data & Curve



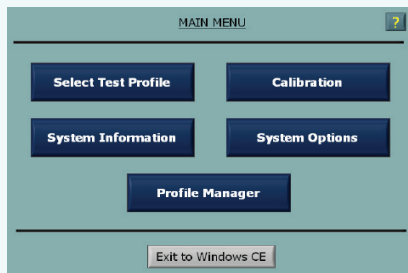
Rev. 09.12.2022

# A variety of tests to meet every need

- + **Removal Test** - Designed to measure the torque required to open a threaded closure.
- + **Incremental Test** - Designed to measure the torque required to open a threaded closure then reapply it to a position that will prevent leakage.
- + **Bridge Test** - Designed to measure the torque required to both open a threaded closure and then break the bridges of the tamper evident band.
- + **Reverse Ratchet Test** - Designed to measure the torque required to rotate a child-resistant cap in its free state.
- + **ROPP Test** - Designed to measure the torque required to open, break the bridges and then strip the threads on a Roll-On Pilfer Proof cap.
- + **Close Test** - Designed to apply a cap to an exact torque, thus enabling the Torqo II+ to be used as a precision capper.
- + **Strip Test** - Designed to determine a very important process limit, the strip torque. During the strip test, the cap is over-tightened until the threads fail and the cap turns lose.

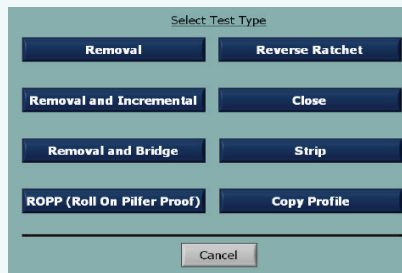
## System Features

The Main Menu displays all of the Torqo II programming categories.



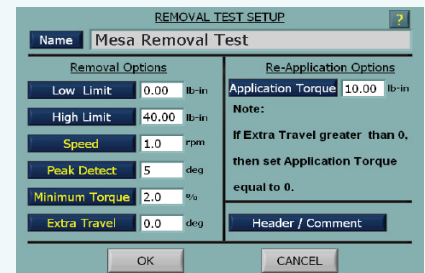
## Select a Test Type

Simply touch a button to select a test.



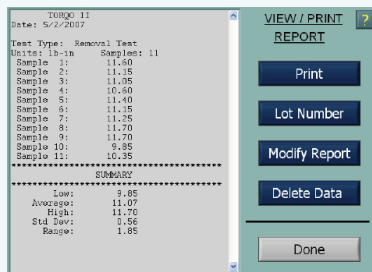
## System Options

Select those test features that best suit the application.



## Timely Information

Save money with the early detection of problems.



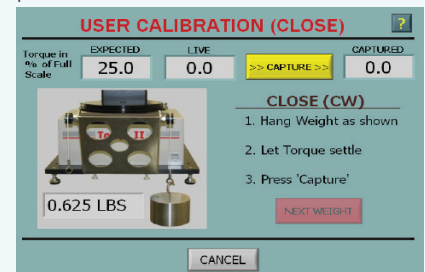
## Using the Gold Bottle

A quick and easy calibration check.



## Calibration in the Field

Simply observe the pictures and follow the on screen, step-by-step procedure.



## General Specifications

The torque ranges and accuracies displayed in the following table are all inclusive. Testing can be destructive or non-destructive, depending on the cap and bottle design. The resolution of all models is 0.1%.

Environment	
Temperature Range	32 to 100°F (0 to 40°C)
Relative Humidity	Up to 90% (non-condensing)
System Weight:	125 lbs (57 kg)

Model No.	Capacity (lbfin)	Accuracy
1600-05	5	0.125 lbfin
1600-10	10	0.125 lbfin
1600-20	20	0.5% of capacity
1600-30	30	0.5% of capacity
1600-40	40	0.5% of capacity
1600-50	50	0.5% of capacity
1600-100	100	0.5% of capacity
1600-200	200	0.5% of capacity